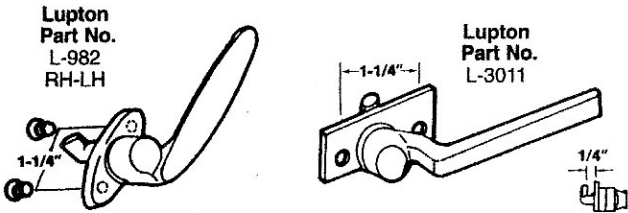
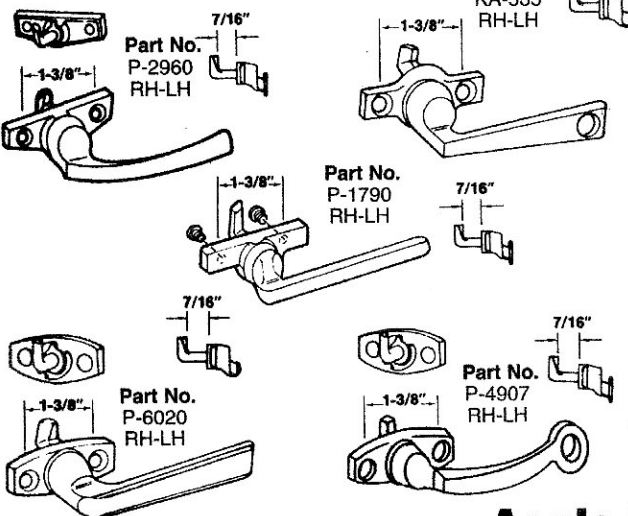


# Window Hardware

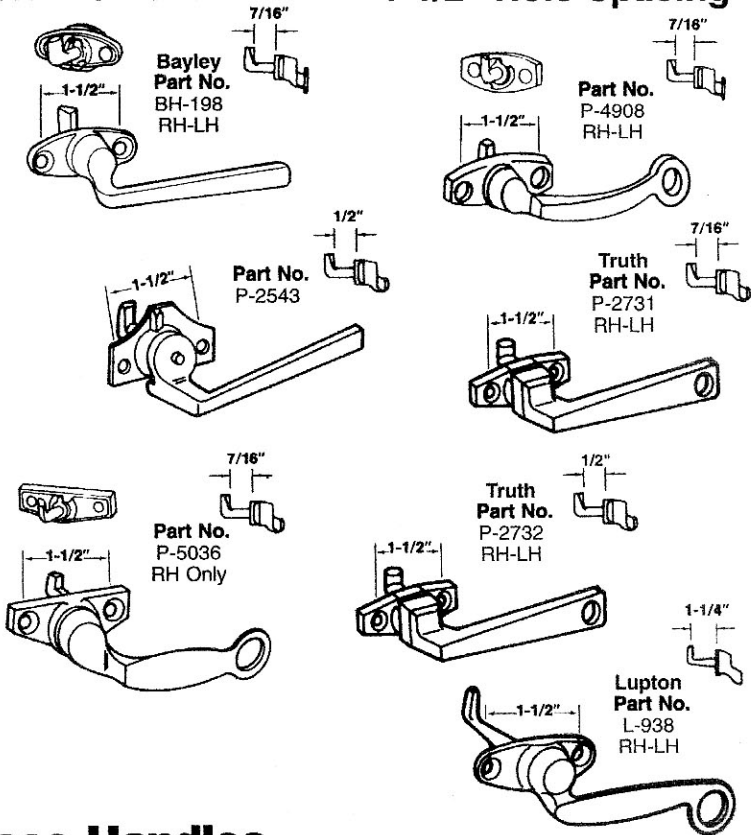
## 1-1/4" Hole Spacing



## 1-3/8" Hole Spacing



## Project-In Handles



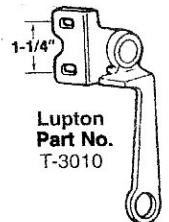
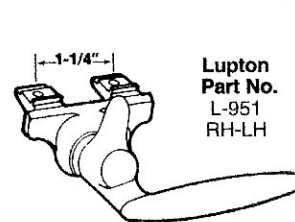
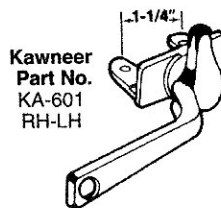
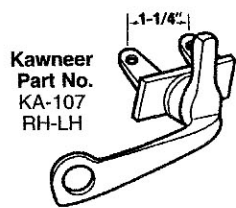
## 1-1/2" Hole Spacing

## Angle Base Handles

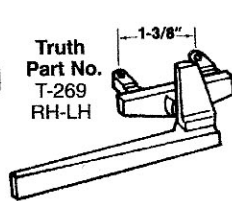
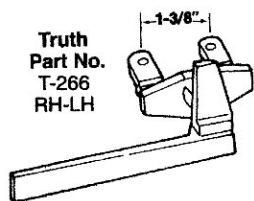
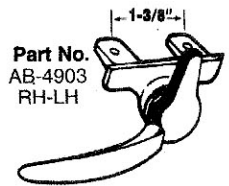
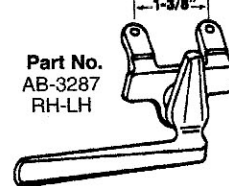
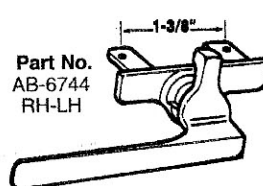
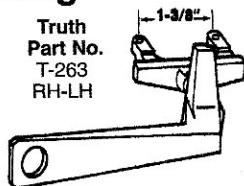
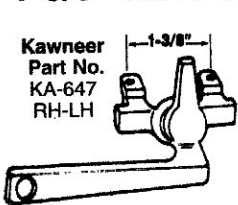
### 1-1/8" Hole Spacing



### 1-1/4" Hole Spacing



### 1-3/8" Hole Spacing



### 1-1/2" Hole Spacing

