

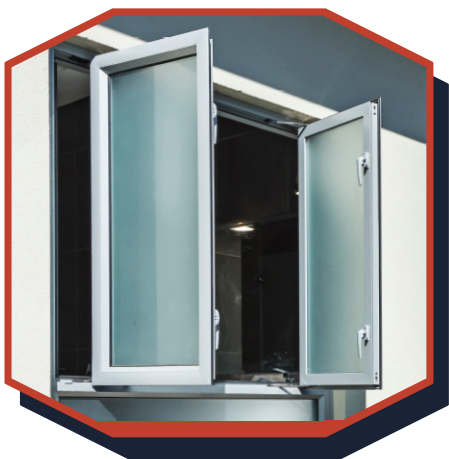


WielhouwerRH

Catalogue



Hardware
Specialists



Proudly
Canadian



Since
1981

Representing Manufacturers including:

Jacknob[®] Corp. **hadrian**[®]



Taymor[®]

PEM KO

Gallery[™]

ASSA ABLOY

specialty hardware ltd.



ASI[®] *American Specialties, Inc.*

better from every perspective[™]

 **CANAROPA**



 **ESSENTRA**
COMPONENTS

Contact Us:

Monday to Friday, 8:00am to 5:00pm (EST).

Located at 1223 Talbot Street, St. Thomas, ON.

www.replacementhardware.ca

info@replacementhardware.ca

1-800-465-2815

If the part you are looking for is not present,
please email us a photo!

Contents

Toilet Partition Hardware.....	1
Locker Hardware	16
Washroom Accessories.....	17
Washroom Stalls.....	18
Door Hardware	19
Window Hardware.....	20
Casters.....	22
Security Mirrors.....	23

Pivot Hinges



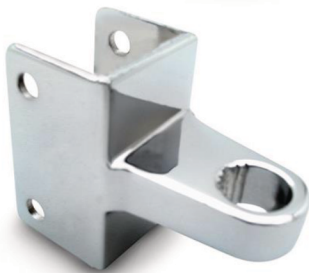
3010



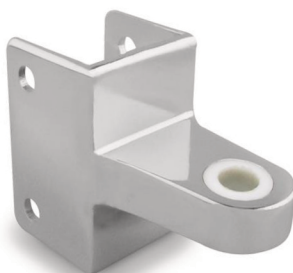
3150



3510



3540



3650

Part #	Hole C/C	Post to Pivot	Pilaster Thickness	Mounting	Compatibility
3010	1-1/2"	1-5/32"	1-1/4"	Bottom	Flush Metal
3150		1-5/16"		Bottom	Shanahan
3510		1-3/32"		Top	Flush Metal
3540		1-5/16"		Top/ Bottom	Global
3650		1-3/8"		Top	Shanahan

GSS Kits



599-500/501
Hinge Pin Repair Kit



599-723/ 599-724
Retro Fit Door Kit

Surface Mounted Hinges

Toilet Partition Hardware



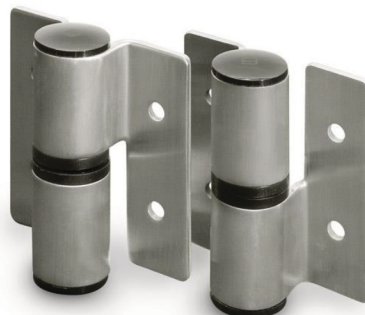
7011



7021



7093



7103



7113

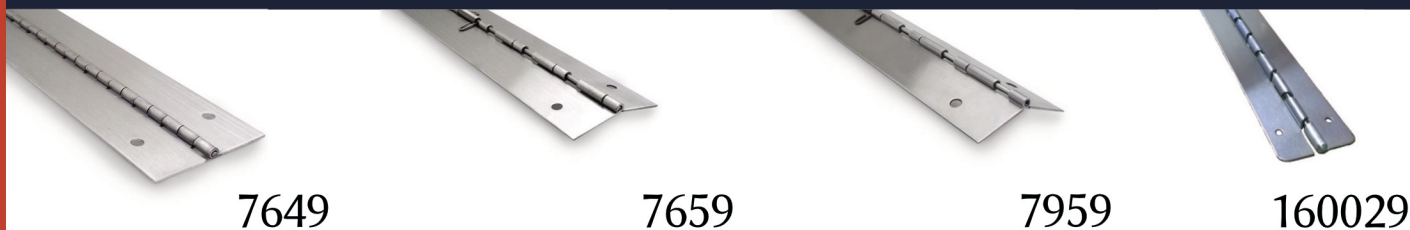


7413

Part #	Construction	Door Swing	Max Capacity	Emergency Access
7011	Stamped	RH-In or LH-Out	50 lb./Door	Yes
7021		LH-In or RH-Out	50 lb./Door	
7093		RH-In/ LH-Out	70lb./Door	
7103		LH-In or RH-Out		
7113	Die-Cast	RH-In or LH-Out		
7123		LH-In or RH-Out		
7413		RH-In or LH-Out		
7423		LH-In or RH-Out		
8169	Stamped	RH-In or LH-Out		
8179	Stamped	LH-In or RH-Out		

If the part you are looking for is not present, please email us a photo.

Continuous Hinges



Part #	Door Swing	Length
7649	RH-In or LH-Out	57-1/2"
7659	RH-In or LH-Out	57-1/2"
7669	LH-In or RH-Out	57-1/2"
7959	RH-In or LH-Out	54"
7969	LH-In or RH-Out	54"
160029	Non-Handed	57"

Top Pins



Part #	Material	Finish	Construction	Length	Diameter	Compatibility
98584	Steel	Zince-Plated	Machined	3"	3/8"	Flush-Metal
99109				3-1/2"	3/8"	Comres
99574				3-9/32"	7/16"	Fiat

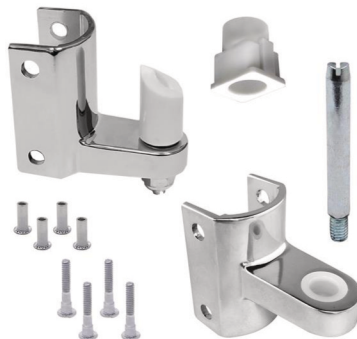
Vault Hinges, ASI/ Global



Hinge Packs & Sets



63130



63140



63150

Part #	Material	Finish	Door	Pilaster	Fasteners	Compatibility
63130	Zamac	Chrome	1"	1-1/4"	One Way	N/A
63140				1-1/4"		Flush-Metal
63150				1"		Bobrick

Cams & Pintles



89820



89830



98185



98175



98195



98265



98275



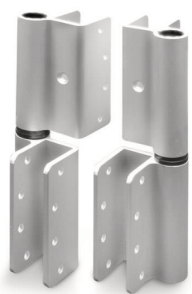
97275

Part #	Finish	Required Pintle	Compatibility
89820	White	89830	Global
98185		98175	Flushmetal
98195		98175	Shanahan
98275		98265	N/A

Part #	Finish	Required Cam	Compatibility
89830	White	89820	Global
98175	White	98245	N/A
98265	White	98275	N/A
97275	Black	97265	Knickerbocker

If the part you are looking for is not present, please email us a photo.

Comtec Wrap Hinges, Buddsteel Hinge Set



7978



A-100

Hadrian Wrap Hinges



601350



601550

Hadrian Flush Hinge Assembly



601300



601500

Mills Wrap Hinge Assembly



HDWT-S100



HDWT-S110

Door Inserts

Toilet Partition Hardware



4060



4066



4540



4550



4700

Part #	Material	Finish	Door	Required Pin	Compatibility
4060	Die-Cast Zamac	Unplated	1" Material	98185	Metpar/ Ampco
4066	Die-Cast Zamac	Unplated	1" Material	97435	N/A
4540	Chrome Zamac	Plated	1- 5/32" Material	98584	N/A
4550	Chrome Zamac	Bright	1" Material	98584	Metpar/ Ampco
4700	Chrome Zamac	Bright	1" Material	98195	Fiat

U-Trim, Pulls



1680



6200



6203

If the part you are looking for is not present, please email us a photo.

Surface Mounted Latches



4988



5020



5030



5050



5060



6309



6409



6540



6983



8698



9689

Part #	Finish	Hole C/C	Bar Style	Swing	Compatibility
4988	Aluminum, Clear Anodized	3-1/2"	Slide Bar	Inswing	N/A
5020	Chrome Zamac	2-3/4"		Inswing/ Outswing	
5030	Chrome Zamac	2-3/4"		Inswing/ Outswing	
5050	Chrome Zamac	3-1/2"		Inswing/ Outswing	
5060	Chrome Zamac	3-1/2"		Inswing	
6309	Stainless Steel	1-7/8"		Inswing/ Outswing	
6409	Stainless Steel	1-7/8"		Inswing	
6540	Chrome Zamac	2-5/8"		Inswing/ Outswing	Sanymetal
6983	Stainless Steel	1-3/4"		Inswing/ Outswing	Mills
8698	Satin Chrome	2-3/4"		Inswing/ Outswing	Accurate
9689	Stainless Steel	7/8"		Inswing/ Outswing	Bobrick

Other Manufacturers



S-250 (Buddsteel)



A-250 (Buddsteel)

Latch & Keeper



6049



9099

Part #	Door Thickness	Bar Style	Swing	Compatibility
6049	Any Material	Slide Bar	Inswing/ Outswing	N/A
9099	Any Material	Slide Bar	Inswing	Bobrick

Knob Sets



6140



6150



6170



111940



111950

Part #	Hole C/C	Bar Style	Swing	Compatibility
6140	N/A	No Bar	Inswing/ Outswing	Flush-Metal
6150		No Bar		Flush-Metal
6170		Slide Bar		Knickerbocker
111940		No Bar		Sanymetal
111950		No Bar		Knickerbocker

If the part you are looking for is not present, please email us a photo.

Concealed Latches



5080



5190

Part #	Finish	Hole C/C	Bar Style	Swing	Compatibilty
5080	Chrome Zamac	N/A	Slide Bar	Inswing/ Outswing	N/A
5190	Chrome Zamac	N/A	Slide Bar	Inswing/ Outswing	ASP

Hadrian, ASI Conc. Latches

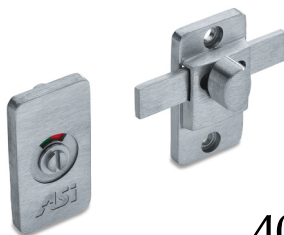


601150



40-8513380

ASI Indicator Latches



40-8563009



40-8563010

Throw Latches



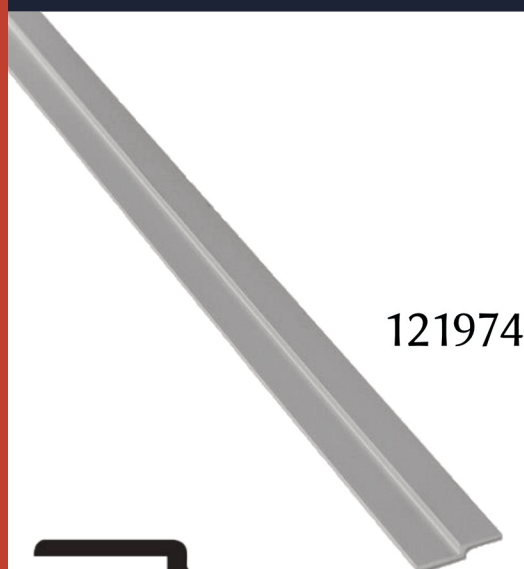
5151



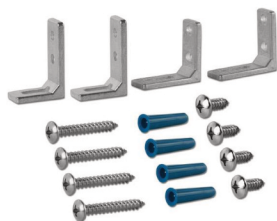
5701

Part #	Finish	Hole C/C	Bar Style	Swing	Compatibilty
5151	Chrome	3-1/2"	Throw Bar	Inswing/ Outswing	N/A
5701	Chrome	N/A			

Pilasters, Panel, Privacy



121974



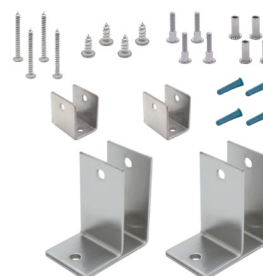
31056



630719



Profile View



615059

Strike and Keepers



5160



5170



5180



5183

Part #	Material	Construction	Finish	Holes C/C	Height	Emergency Access
5160	Zamac	Cast	Chrome	1-1/2"	2-1/2"	No
5170	Zamac		Chrome			No
5180	Zamac		Chrome			Yes
5183	Stainless		Satin			Yes

Other Manufacturers



40-8212360



1040-35

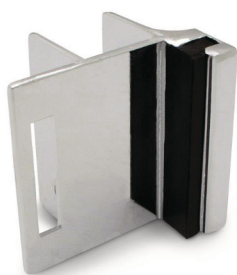


601800

40-8212360	ASI/ Global	Keeper for Indicator Latch
1040-35	Bobrick	I/S Keeper
601800	Hadrian	Strike & Keeper (Concealed Latch)

If the part you are looking for is not present, please email us a photo.

Strike and Keepers: Inswing



5620



5340



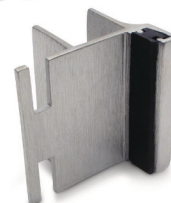
5820



5623



5343



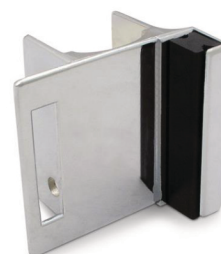
5823



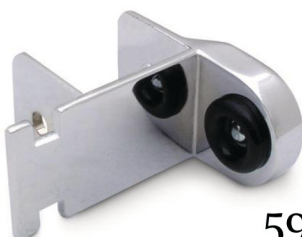
5330



5110



5310



5980



5778



5798

Part #	Finish	Post	Door	Height	Emergency Access
5620	Chrome Zamac	1"	1"	2-1/2"	No
5623	Stainless Steel	1"	1"		No
5340	Chrome Zamac	1-1/4"	7/8"-1"		Yes
5343	Stainless Steel	1-1/4"	7/8"-1"		
5820	Chrome Zamac	1"	1"		
5823	Stainless Steel	1"	1"		
5330	Polished Chrome	1-1/4"	1"		No
5110	Chrome Zamac	1-1/4"	7/8"-1"		
5310	Chrome Zamac	1-1/4"	1"	1-1/4"	No
5980	Chrome Zamac	1-1/4"	7/8"-1"		Yes
5778	Aluminum, Clear Anodized	1"	1"		No
5798	Aluminum, Clear Anodized	N/A	1"	6"	No

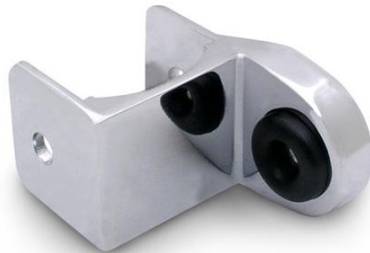
Strike and Keepers: Outswing



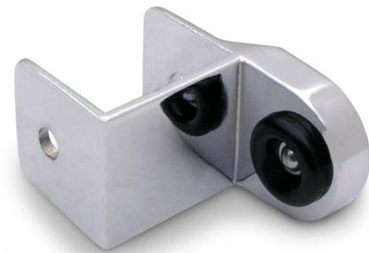
5210



5213



5570



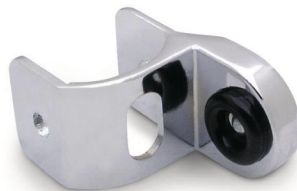
5970

Part #	Finish	Post	Door	Height	Emergency Access
5210	Chrome Zamac	1-1/4"	7/8" - 1"	2-1/2"	Yes
5213	Stainless Steel		7/8" - 1"	2-1/2"	
5570	Chrome Zamac		1"	1-1/4"	
5970	Chrome Zamac		7/8" - 1"	1-1/4"	

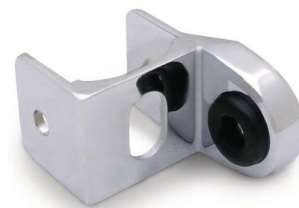
Strike and Keepers: Concealed Latch



5230



5510



5590



5840



5960

Part #	Finish	Post	Door	Height
5230	Chrome Zamac	1-1/4"	1"	2-1/2"
5510			1"	1-1/4"
5590			1"	1-1/4"
5840			1-1/4"	1-1/4"
5960			1"	1-1/4"

If the part you are looking for is not present, please email us a photo.

Brackets



1890



1910



1919



1940

Part #	Material	Construction	Panel	Height
1890	Chrome Zamac	Cast	3/4"	1-3/8"
1900	Chrome Zamac	Cast	7/8"	1-3/8"
1910	Chrome Zamac	Cast	1"	1-3/8"
1919	Stainless Steel	Stamped	1"	1-1/2"
1940	Chrome Zamac	Cast	1-1/4"	1-3/8"



2170



2500



4339

Part #	Material	Construction	Headrail	Height
2170	Chrome Zamac	Cast	1-7/16"	1"

Part #	Material	Construction	Panel	Base	Height
2500	Chrome Zamac	Cast	1-1/4"	6-1/4"	6"
4339	Stainless Steel	Material	1"	3-7/8"	4"

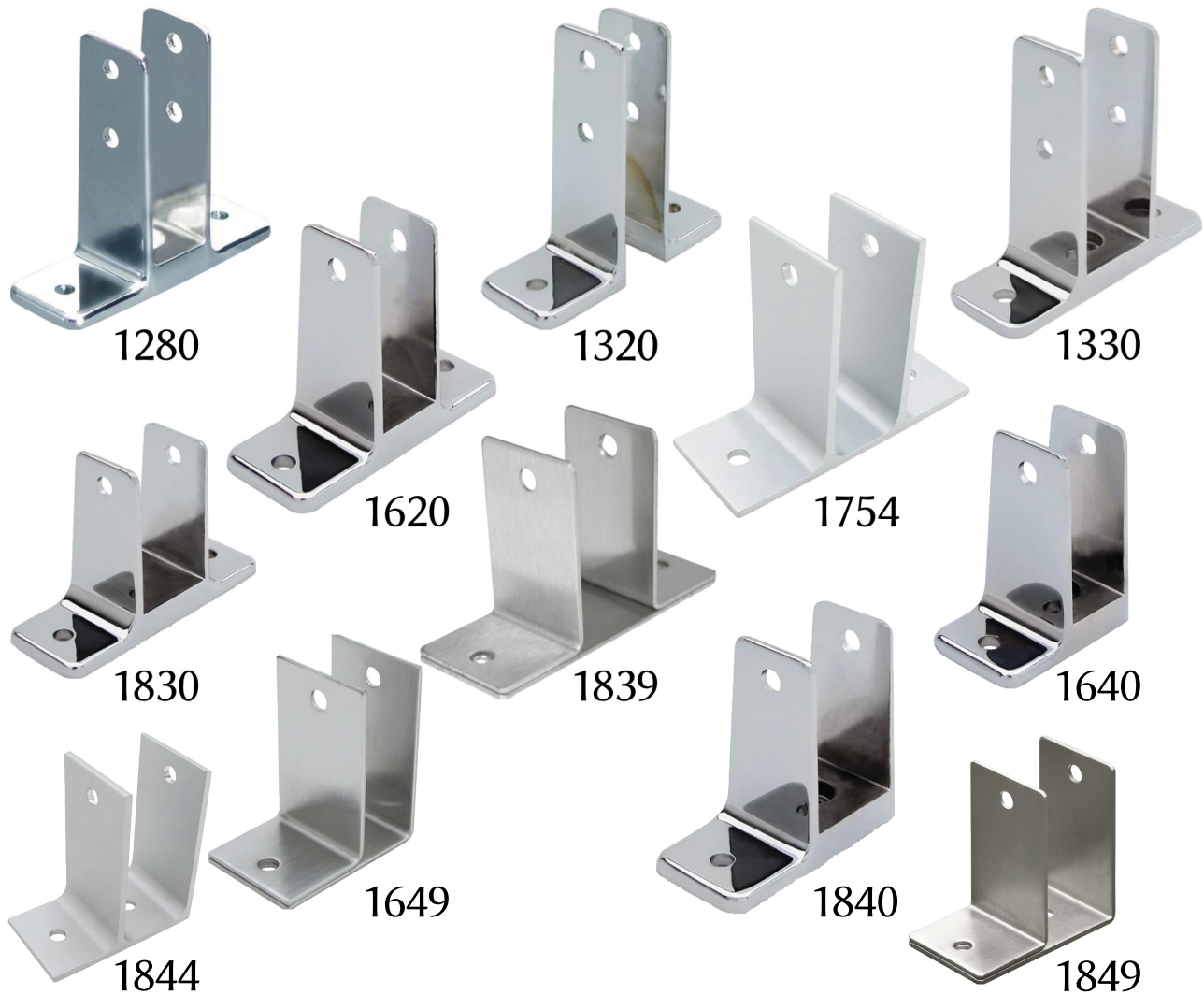


Part #	Material	Length	Panel	Base	Height	Mounting
2334	Aluminum, Clear Anodized	57-1/2"	1"	2-5/8"	2-3/4"	5 Holes
2344	Aluminum, Clear Anodized	57-1/2"	1"	3-3/4"		5 Holes
2354	Aluminum, Clear Anodized	57-1/2"	1-1/4"	2-5/8"		5 Holes
4364	Aluminum, Clear Anodized	57-1/2"	3/4"	2-7/32"		5 Holes

Part #	Material	Length	Panel 1	Panel 2	Height	Mounting
2859	Stainless Steel	54"	1"	1"	3-1/2"	5 Holes

If the part you are looking for is not present, please email us a photo.

One-Ear & Two-Ear Brackets



Part #	Material	Construction	Panel	Base	Height
1640	Chrome Zamac	Cast	3/4"	2"	2-1/2"
1649	Stainless Steel	Stamped	3/4"	2-5/32"	
1760	Chrome Zamac	Cast	1"	2-21/32"	
1840	Chrome Zamac	Cast	1-1/4"	2-3/4"	
1844	Aluminum, Clear Anodized	Extruded	1-1/4"	2-5/8"	2-3/4"
1849	Stainless Steel	Stamped	1/1/4"	2-11/16"	2-1/2"

Part #	Material	Construction	Panel	Base	Height
1280	Chrome Zamac	Cast	1"	4"	3-1/2"
1320			1"	1-1/2" (two pieces)	3-1/2"
1330			1-1/4"	4"	3-1/2"
1620			3/4"	3"	2-1/2"
1750			1"	4"	2-1/2"
1754	Aluminum, Clear Anodized	Extruded	1"	3-3/4"	2-3/4"
1830	Chrome Zamac	Cast	1-1/4"	4"	2-1/2"
1839	Stainless Steel	Stamped	1-1/4"	3-15/16"	2-1/2"

Locker Hasps



Locker Pockets



If the part you are looking for is not present, please email us a photo.



169



103-1



165



711



1125



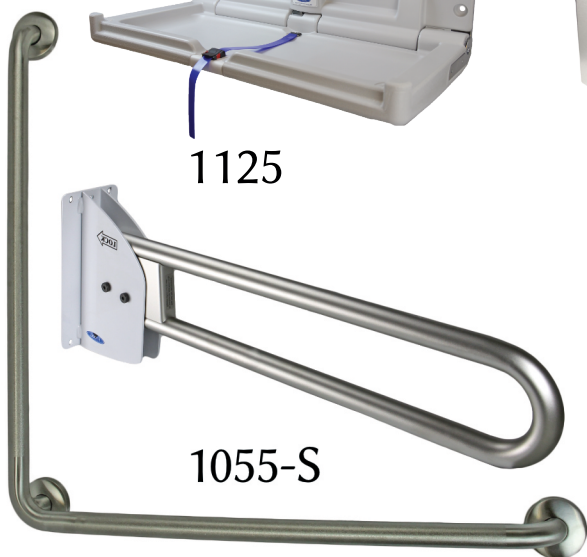
622



303



708A



1055-S



972



1150

1003-SP30X30



1001-NP24

169	Universal Jumbo Double Toilet Tissue Dispenser
103-1	Paper Towel Dispenser
165	Toilet Paper Dispenser
711	Universal Low Profile Style Liquid Soap Dispenser
1125	Baby Change Table
622	Feminine Product Disposal
303	Wall Mounted Waste Receptacle with Galvanized Liner
708-A	Stainless Steel Soap Dispenser
1055-S	Swing Up Grab Bar
972	Full Wall Mounted Shower Seat
1150	Safety Coat Hook
1003-SP30X30	Stainless Steel Grab Bar
1001-NP24	Stainless Steel Grab Bar

Toilet Partitions

Washroom Stalls



Solid Plastic (HDPE)



Powder-Coated Metal



Stainless Steel



Phenolic

If the part you are looking for is not present, please email us a photo.



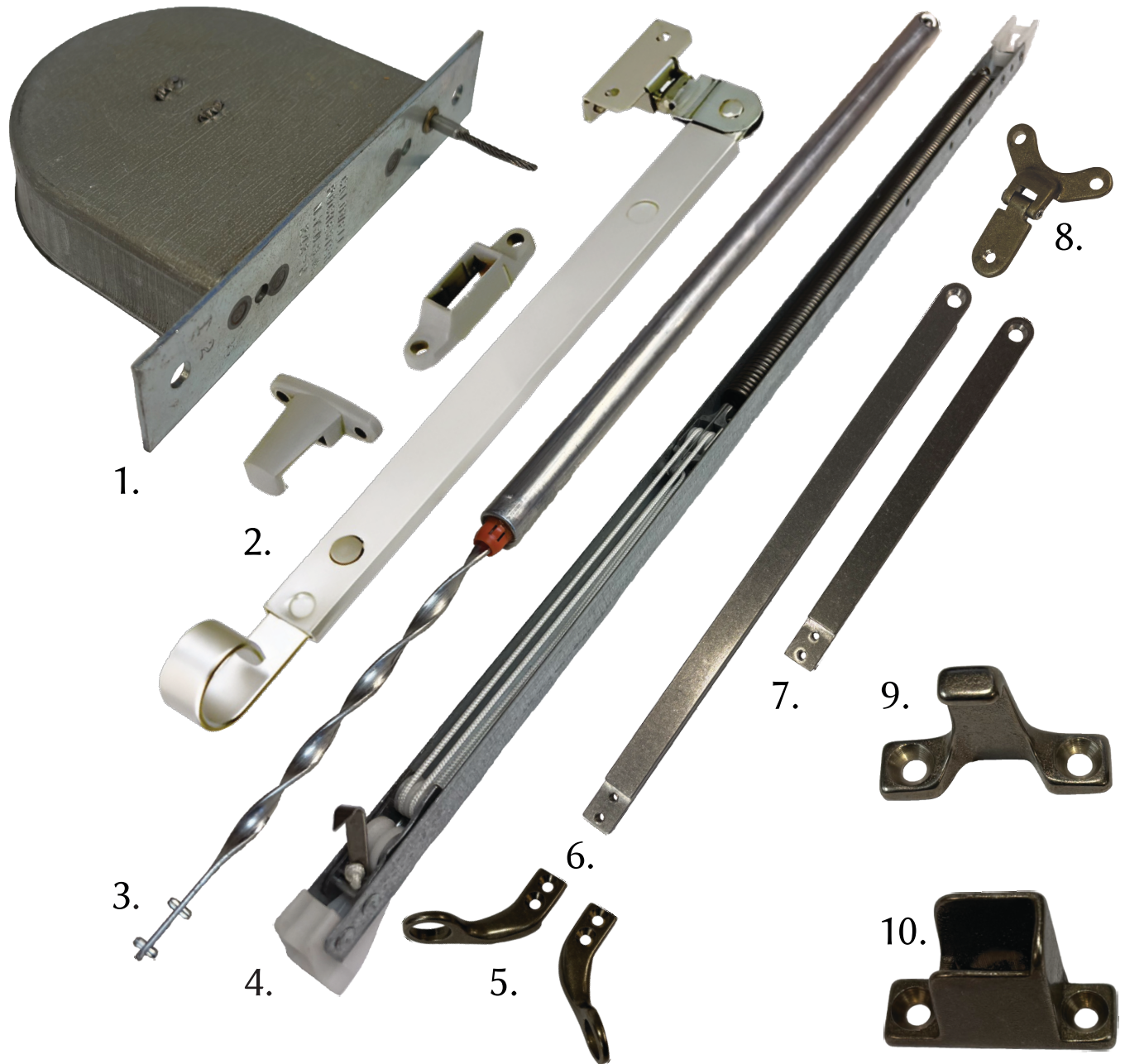
751AL	Dorex Door Closer
18-5	Kick Down Door Holder
316	316 Series Standard Perimeter Gasket
DGS-WAR480B	Door Sweep With Nylon Brush and Rain Drip
GSH 1184	Door Pull
441-AL	Door Closer
GSH 80	Kick Plate
T200-C26D	Low-rise Dome Door Stop
T231-C26D	Convex Wall Stop (2 3/8" Diameter)
F1H53-C26D	Heavy-Duty Entry Lever
FHA51-C26D	Medium-Duty Single Cylinder Deadbolt
8500	Dorex 8500 Series Exit Device
4131	4131 Series Automatic Door Bottom
2750	2750 Series Commercial Flat Saddle Threshold



15.32.32.261	Left Hand Ellipse Roto Gear Operator 13.5"
50.00.32.211	Left Hand Maxim Dual Arm Casement Operator
23.00.32.201	Left Hand Rear Mounted Stainless Steel Roller 9.5"
50.10.00.211	Left Hand Encore Dual Arm [Silver Spline]
10579.32	Truth Long Handle
12614.32	Truth Left Hand Tango Handle Cover [Silver Spline]
22.18.32.212	Truth-Front Mounted Awning Pivot Shoe 23.750"
14.75.00.270	Right Hand (Stand.) Casement Hinge Assembled 10"
15.10.00.201	Left Hand EntryGard 4 - 7/16"
15.18.32.261	Left Hand Ellipse Dyad Roto Gear Casement Operator

If the part you are looking for is not present, please email us a photo.

Push Bars and Balances



1.	Clockspring Tape Balance
2.	Telescoping Push Bar Window Operator w/ Rest and Escutcheon
3.	Spiral Balance
4.	Block & Tackle Channel Balance
5.	Ring Handle(s) (L & R)
6.	Push Bar, 12"
7.	Push Bar, 7"
8.	Link Bracket Butterfly
9.	Rest
10.	Escutcheon



D4.05109.935 KW BRK7 SS



D4.05109.925 BRK4 SS



D4.05109.925 SS



2.05456.444



2.05256.53 BRK5



2.05267.565 MTG40

D4.05109.925 SS	Defender D4 Series Stainless Steel
D4.05109.925 BRK4 SS	Defender D4 Series Stainless Steel
D4.05109.935 KW BRK7 SS	Defender D4 Series Stainless Steel
2.05267.565 MTG40	Light Duty Caster
2.05256.53 BRK5	Light Duty Caster
2.05456.444	Medium Duty Caster

If the part you are looking for is not present, please email us a photo.

Security Mirror



#4 Stainless Steel



X-L Buff Stainless Steel

Corner Guard	18 gauge 304 #4 Brush Stainless Steel
Corner Guard	20 gauge X-L Buff Stainless Steel Mirror



850



850 - Fixed Tilt



ICM

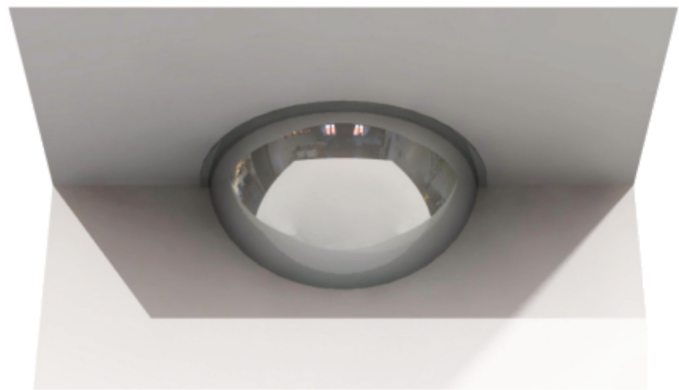
850	SERIES 850 Channel Framed Mirror
850 Fixed Tilt	SERIES 850 Channel Framed Mirror FIXED TILT
ICM	Indoor Convex Mirror
ECM	Outdoor Convex Mirror



FHD



QHD



HHD

QHD	Quarter Dome Mirror
HHD	Half Dome Mirror
FHD	Full Dome Mirror

If the part you are looking for is not present, please email us a photo.

1-800-465-2815

www.replacementhardware.ca